



GEORG-AUGUST-UNIVERSITÄT
GÖTTINGEN

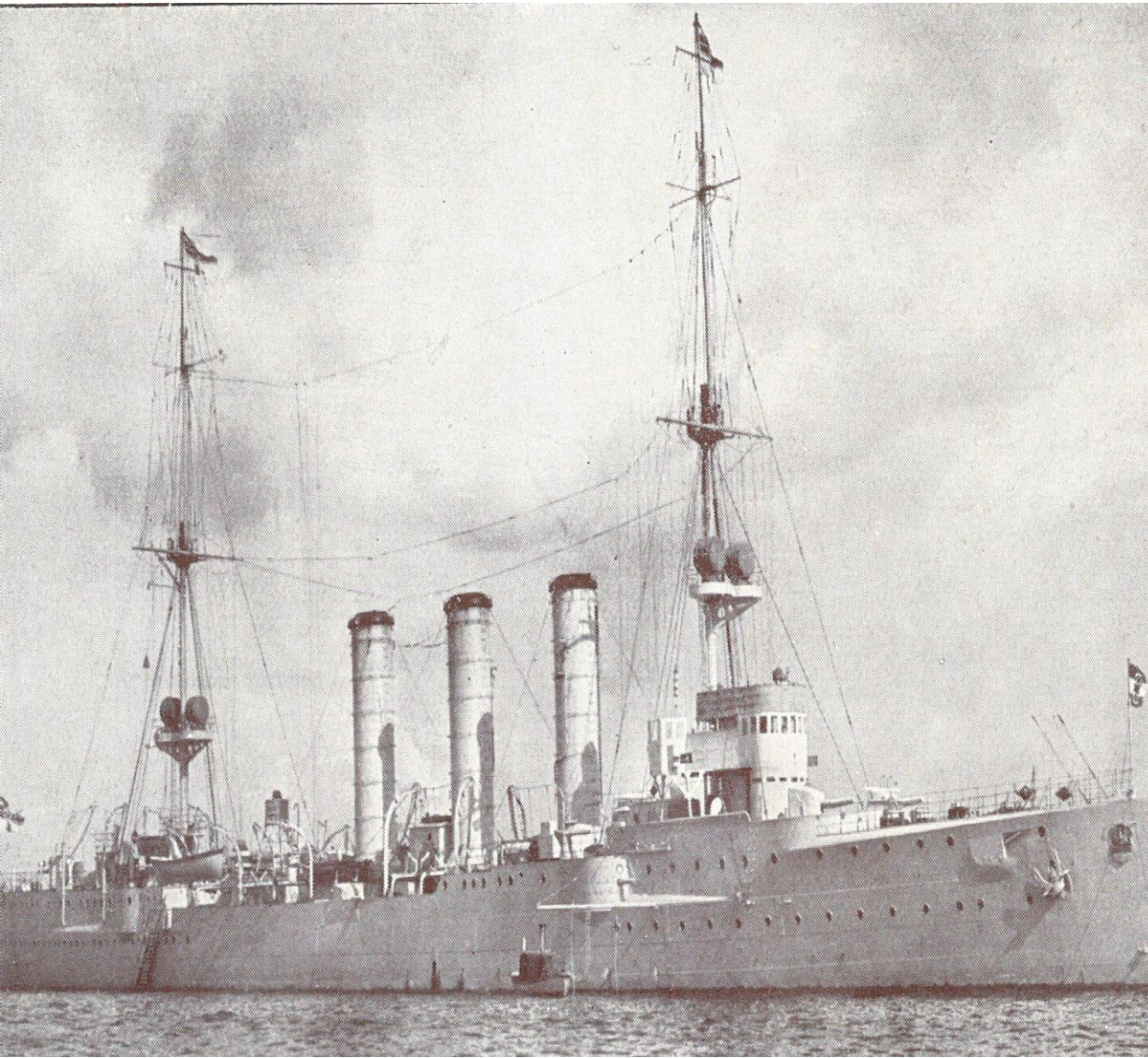


Jayabalan Murthy

Philosophy, Religious Studies

*First World War and its Impact on German Lutheran Mission Societies
in India (1914-1916)*

SMS EMDEN



GERMAN MISSIONARIES IN INTERNMENT CAMP



Photos courtesy/acknowledgement

1.V. Mücke, *EMDEN* (Berlin: August Scherl g.m.b.h, 1915), page.16

2. Martin Keiper, *Die Sünde des Weissen Mannes, in Wendepunkt Weltkrieg: Der Erste Weltkrieg-umbruch in der Missionsgeschichte*, (Herrmansburg: Ev-Luth Missionswerk in Niedersachsen (ELM), H 2085,Heft Nr.4. 2014) Page:6